



vibrant planet

# How Truckee Fire Protection District is Creating a Dynamic, Collaborative CWPP

140,414

acres of landscape coverage

15

large landowners/agencies

9 weeks

from adoption to core stakeholder consensus



## CHALLENGE

**Accelerating collaboration on hazardous fuels treatment prioritization over a complex landscape.**

Truckee Fire Protection District safeguards a stunning alpine community, including parts of the Tahoe National Forest. Unfortunately, Truckee experiences constant wildfire risk. Regularly refreshing Community Wildfire Protection Plans (CWPPs) to assess hazards, spatially organize valuable resources/assets, and prioritize treatments is key to implementing the National Cohesive Wildland Fire Management Strategy.

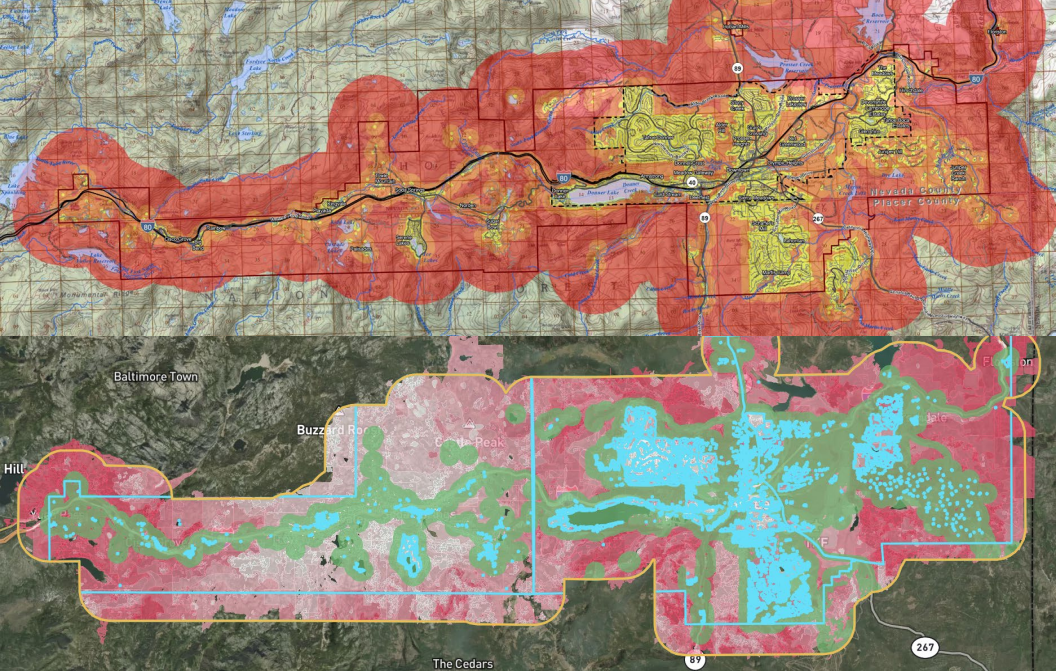
Historically, Truckee Fire lacked unfettered access to high-quality data or advanced planning tools, often engendering a resource-intensive CWPP process with dozens of stakeholder meetings relying on paper-based maps and/or data that may not reflect current landscape conditions. A more efficient, data-driven approach to CWPP collaboration was needed.

## SOLUTION

**Modernizing collaborative CWPP planning using an efficient and effective decision-support tool.**

Truckee Fire realized their need for an accelerated, collaborative CWPP refresh required a modern solution. The district partnered with Vibrant Planet to deploy a cloud-based scenario-building and decision-support tool for prioritizing hazardous fuel reduction treatments.

In using the science-based platform, the district has dramatically streamlined its stakeholder collaboration process while ensuring its CWPP reflects the collaborative's diverse priorities. Harnessing a specialized data curation process led by Vibrant Planet and Truckee Fire, industry-leading wildfire modeling from Pyrologix, and collaborative planning using the decision-support tool, the CWPP prioritizes projects at the treatment unit-level with the highest stakeholder-weighted societal value.



Above: Truckee Fire's previous static WUI map and hazard assessment  
 Below: Vibrant Planet's dynamic WUI planning area with latest data

“We’re creating a prioritized mitigation roadmap for land treatments going forward using Vibrant Planet, with the goal of enhancing community wildfire protection. We want our stakeholders to use Vibrant Planet to prioritize the things they care about, and then we can work together on where those scenarios overlap instead of competing with each other.”

– Dillon Sheedy, Assistant Wildfire Prevention Manager, Truckee Fire Prevention District

## RESULTS

### Enhancing collaboration, prioritizing Truckee’s unique needs, and adapting to change.

#### Enhancing and accelerating collaboration

Traditionally, finding consensus among 15+ CWPP stakeholders is complex/time-consuming. Truckee Fire rapidly gained consensus with the core project team of agencies and is accelerating engagement with broader stakeholders and the public by leveraging Vibrant Planet’s collaborative planning platform. Truckee Fire and its partners, including the Forest Service and private landowners, assign priorities depending on specific land use contexts, such as protecting physical assets or biodiversity, and create treatment scenarios without laborious planning sessions. The district then uses the consensus scenario function to efficiently identify areas of

common ground and can bring neighboring jurisdictions into the planning process, overcoming past limitations of CWPPs.

#### Prioritizing Truckee’s unique needs

Truckee Fire takes its responsibility for community safety seriously and prioritizes its specially designated WUI while excluding treatments within residential areas. Vibrant Planet identified treatments with the greatest impact in Truckee’s WUI by uploading it as a “Strategic Area” with a 150m digital residential buffer.

#### Adapting to changing landscapes

Landscape changes and unplanned disturbances can quickly render vegetation treatment plans that protect communities obsolete, yet CWPPs often take years to update. Additionally, static CWPPs cannot readily incorporate disturbances or land use amendments. Vibrant Planet’s ability to

intake new remote sensing data, updated fuels hazard models, and current landscape conditions meets Truckee Fire’s demand for a dynamic CWPP that maintains relevance.

## SUMMARY

**Accelerating a process that often takes over a year, in 9 short weeks, Truckee Fire worked with Vibrant Planet to:**

- Utilize advanced fuels hazard modeling for CWPP risk assessment
- Align core project team’s priorities using consensus scenario function
- Use custom data to optimize CWPP projects at the treatment unit-level

#### Want to learn more?

Contact [info@vibrantplanet.net](mailto:info@vibrantplanet.net) to speak with a vibrant human.